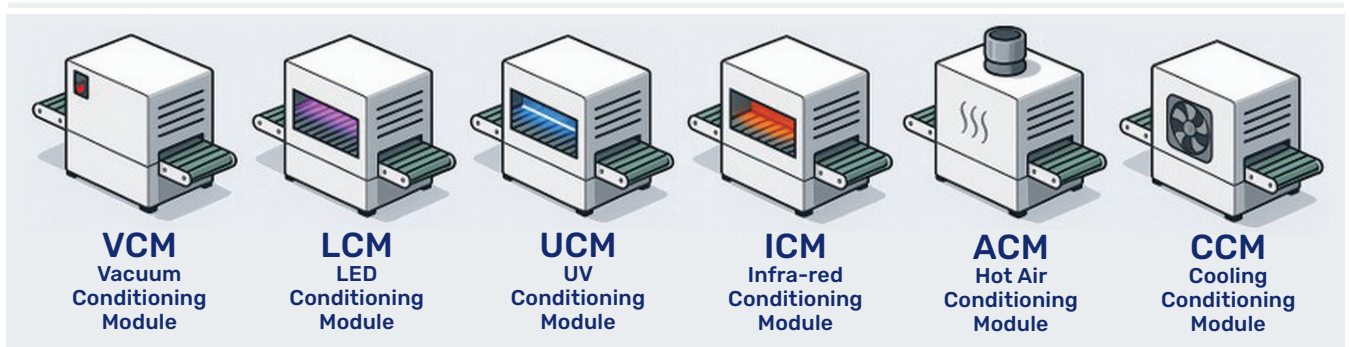


Conformal Coating Conditioning Modules

Natgraph's range of Conditioning Modules have been purpose-built to support the precise and reliable curing of conformal coatings on printed circuit boards.



Designed for seamless in-line integration, each module serves a specific role within the curing process, from controlled cooling and heating to advanced light-based curing methods.



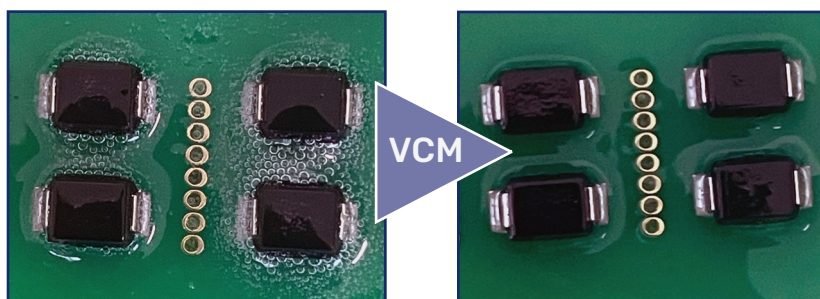
The range includes **Vacuum, LED, UV, Infra-red, Hot Air, and Cooling Conditioning Modules**, offering tailored solutions for a wide variety of coating chemistries and production requirements.

With a strong focus on process control, energy efficiency and compatibility with environmentally conscious manufacturing, these modules ensure consistent coating performance and long-term PCB protection.

Vacuum Conditioning Module

Advanced In-Line Bubble Elimination for PCB Conformal Coating

The Natgraph Vacuum Conditioning Module (VCM) is a pioneering in-line solution developed to eliminate bubbles in conformal coatings on printed circuit boards, ensuring superior protection and long-term reliability.



By resolving air entrapment issues commonly found in both water-based and solvent-based coatings, the **VCM** makes environmentally friendly coating options viable for modern electronics manufacturing.

Key Features

- **Vacuum Chamber**
Adjustable stepped vacuum profile
- **Integrated Heating**
- **Automated Control**
Siemens PLC with HMI for simple operation and recipe management
- **Remote Diagnostics**
- **Flexible Conveyor**
Width: 50–650 mm | Height: 940–965 mm

Operational Benefits

- Eliminates bubble-related defects in solvent and water-based coatings
- Supports eco-friendly production using water-based solutions
- Adjustable speeds and vacuum levels for process control
- Designed for energy efficiency, low maintenance and reliable integration

Transform Your Coating Line

The **VCM** revolutionises **PCB conformal coating**, offering high-quality, bubble-free finishes while supporting sustainable manufacturing practices.

Get in touch with Natgraph today to discuss integration options and see how the VCM can benefit your production.