



**JBC**  
The Soldering Co.

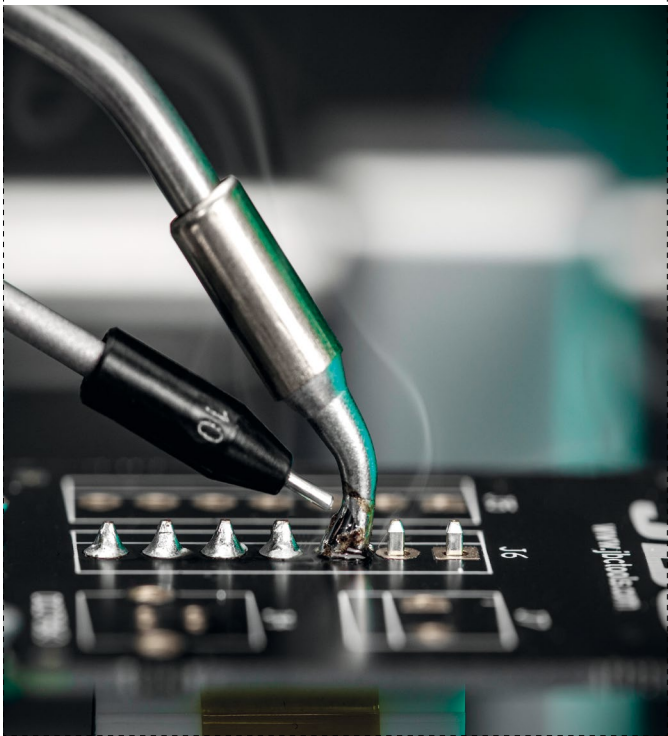


## Automatic-Feed Soldering Station

When repetition becomes perfection

# ALE Automatic-Feed Soldering Station

- Consistently dispenses programmed amounts, ensuring **uniform soldering joints**.
- Work without interruptions makes the **process more efficient**.
- It makes soldering cable and THT components easier by freeing one hand for better stability, while **ergonomic hand positioning enhances repetitive processes**.



## Intuitive menu and interface

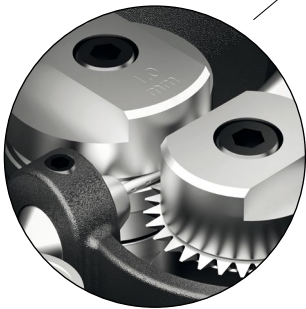
A **user-friendly interface** that allows you to program and personalize your station, feeder and tool settings to make your soldering process more productive.

It allows the operator to work more efficiently thanks to its **3 working modes**:

**Continuous Mode** - Allows the operator to **manually control the amount of solder wire being fed** at selected speed.

**Discontinuous Mode** - Allows the operator to **program the solder-wire speed and length** that will automatically be dispensed when the button of the tool is pushed.

**Program Mode** - The operator can **customize up to 5 programs, each one with 3 different steps**, making the process more dynamic and efficient.

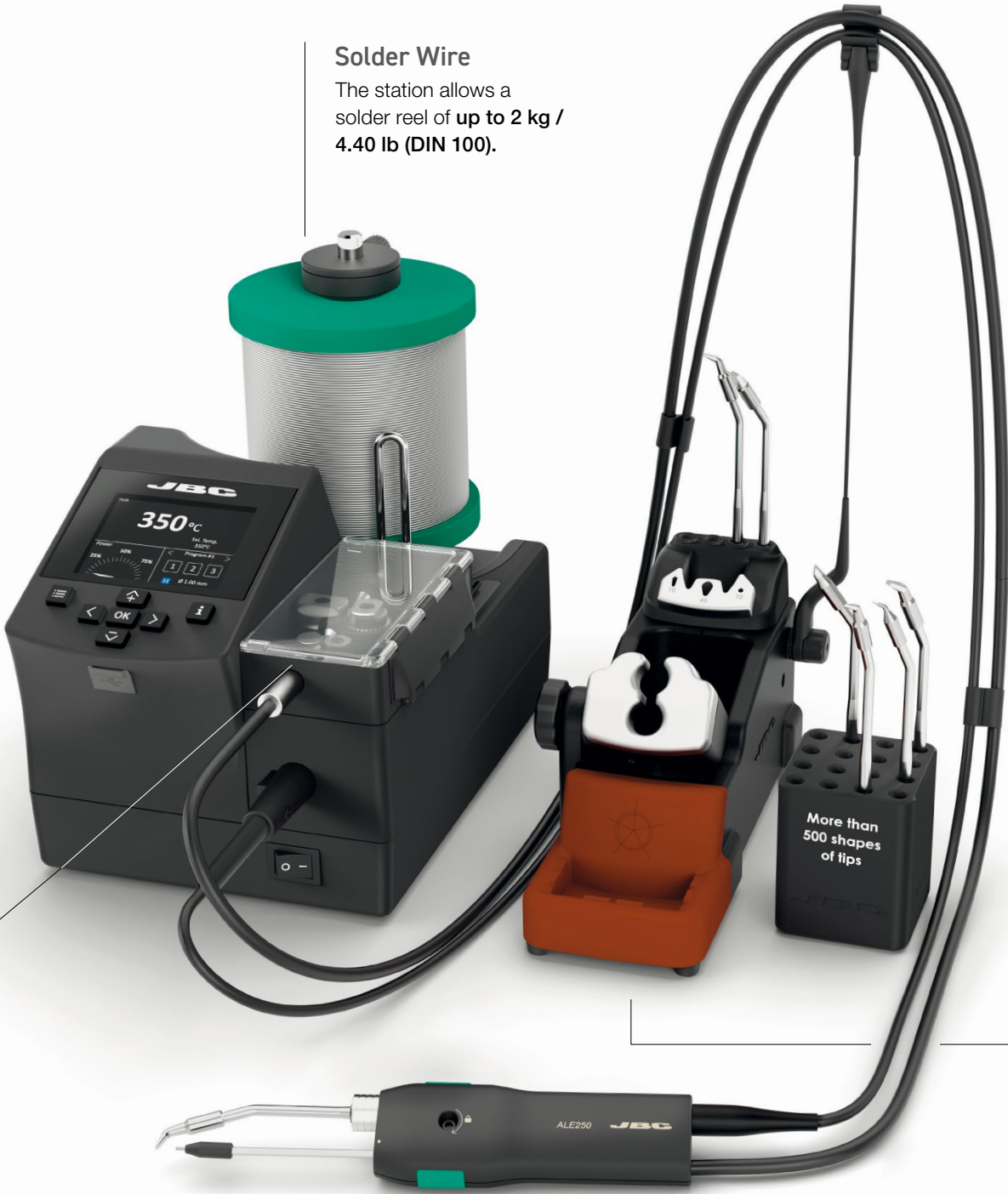


## Guide Sets

Available with or without solder-wire perforation. **The perforation allows better flux flow and outgassing**, avoiding solder and flux splashing during the soldering process.

## Solder Wire

The station allows a solder reel of **up to 2 kg / 4.40 lb (DIN 100)**.



## Quick Cartridge Exchanger and Holder

Save time and increase productivity by using **Quick Cartridge Exchanger**, which facilitates **fast and safe use** of different cartridge geometries. **Cartridge Holder** allows storing of up to four cartridges.

## Intelligent Heat Management

The station incorporates **Sleep & Hibernation Modes**, that automatically lower the tip temperature when the tool is placed in the tool holder. As a result, JBC tips last 5 times longer than other brands.

## Tip Cleaning System

The stand includes an integrated tip cleaner with antispash rubber to **prevent splashing of solder particles** and maintain the work area clean.

The most complete **Tip Cleaning System** allows you to choose from two safe methods according to your needs: metallic wool and sponge.

## Specifications

Ref. - Voltage (AC) / Fuse	<b>ALE-910VB</b> - 100V <b>ALE-110VB</b> - 120V <b>ALE-210VB</b> - 230V	Compatible solder reel	<b>Weight</b> - up to 2 kg / 4.4 lb <b>Diameter</b> - max. 100mm / 3.94 in <b>Height</b> - max. 100mm / 3.94 in
Selectable temperature	90 to 450 °C / 190 to 840 °F	Wire diameter	Ø 0.38 - 1.8 mm / 0.015 - 0.073 in
Operating temp. range	10 to 50 °C / 50 to 122 °F	Max. wire length	250 mm/s / 4.72 in/s
Output peak power	150 W - 23.5 V	Max. forward speed	50 mm/s / 4.72 in/s
Connectivity	USB - B	Tip-to-ground voltage	<2 mV RMS
Tip-to-ground resistance	<2 ohms	Equipotential bonding	Connection to EPA

Complies with CE standards. ESD Protected.

## ALE250 Automatic-Feed Soldering Iron

The perfect tool when solder amount consistency is required across **repetitive solder joints**.

### Dragging button

By pushing the button, the tool automatically feeds the precise amount of solder programmed in the station.

### Cartridge Range

ALE250 Automatic-Feed Soldering Iron is compatible with both **straight** and **bent tips**, allowing you to adapt to your specific working needs.



### GALE10V Guide Kit

The tool is compatible with solder wires from **0.38 mm / 0.015 in** up to **1.80 mm / 0.073 in**.

## Solder Wire Guide Kits

### Ref. with Solder-Wire Perforation

Ref.	Solder Wire Ø
<b>GALE08V</b>	0.8 mm / 0.032 in
<b>GALE10V</b>	1.0 mm / 0.040 in
<b>GALE12V</b>	1.2 mm / 0.047 in
<b>GALE15V</b>	1.5 mm / 0.059 in
<b>GALE16V</b>	1.6 mm / 0.063 in



### Ref. without Solder-Wire Perforation

Ref.	Solder Wire Ø
<b>GALE04D</b>	0.38-0.40 mm / 0.015-0.016 in
<b>GALE05D</b>	0.46-0.56 mm / 0.018-0.022 in
<b>GALE06D</b>	0.60-0.64 mm / 0.023-0.025 in
<b>GALE07D</b>	0.70-0.78 mm / 0.028-0.031 in
<b>GALE08D</b>	0.80-0.82 mm / 0.032-0.033 in
<b>GALE10D</b>	0.90-1.10 mm / 0.036-0.044 in
<b>GALE12D</b>	1.14-1.27 mm / 0.045-0.051 in
<b>GALE15D</b>	1.50-1.57 mm / 0.060-0.063 in
<b>GALE16D</b>	1.60-1.63 mm / 0.063-0.065 in
<b>GALE18D</b>	1.80 mm / 0.073 in

## Curved Solder Wire Guide

Use this accessory for tasks requiring straight cartridges.

Ref.	Solder Wire Ø
<b>0032589</b>	0.4 - 1.2 mm / 0.015 - 0.047 in



**I-TRONIK S.R.L. Unipersonale**  
 Viale dell'Artigianato, 20 - 35010 - Peraga di Vigonza (PD)  
 Tel. +39.049.895.2300 - Fax +39.049.893.4822 - P.IVA 01443020282  
 commerciale@itronik.it - [www.itronik.it](http://www.itronik.it)



0034712/1024