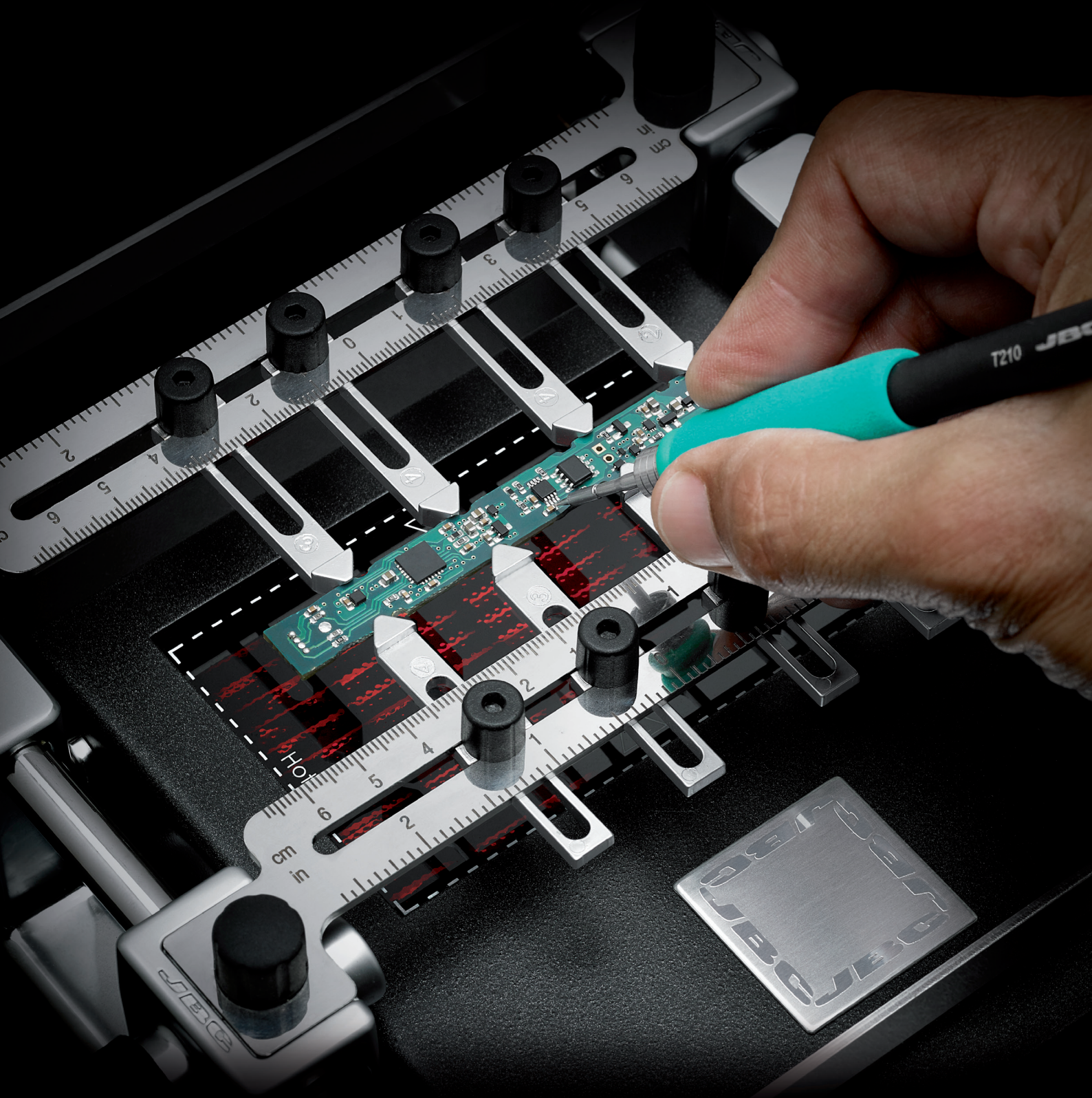




JBC

The Soldering Co.



PCB Preheaters

Reduce the risk of thermal shock while reworking

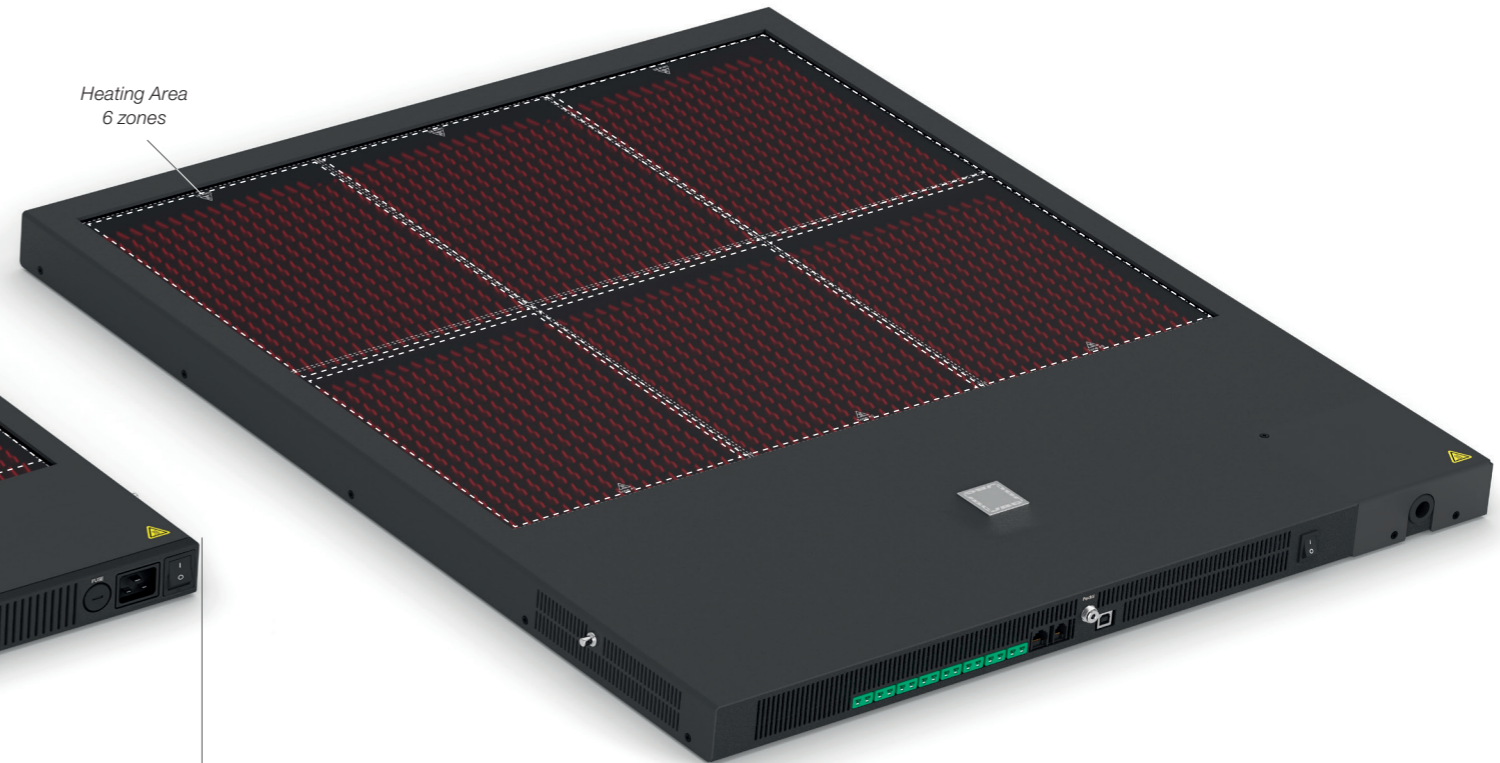
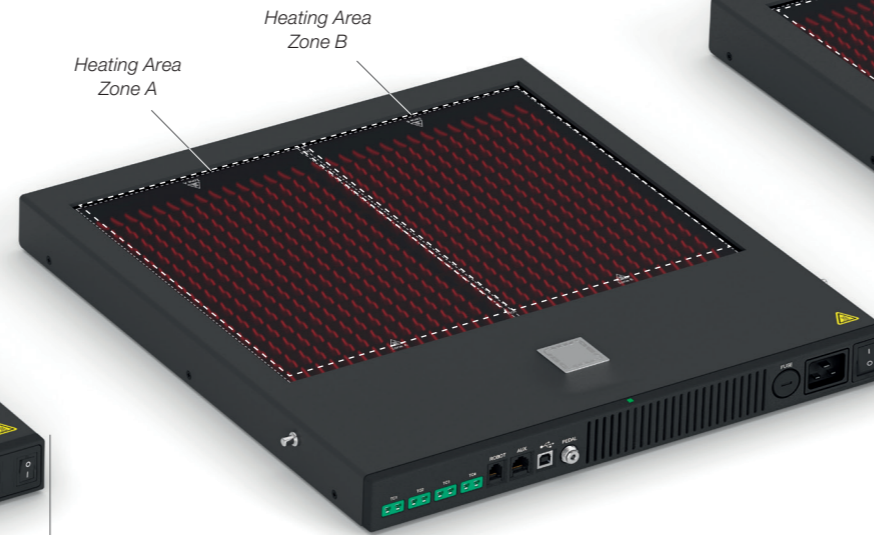
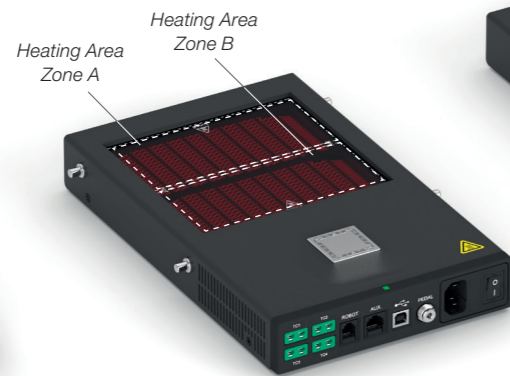
PCB Preheaters

Forget about thermal shock

Matchless reliability in **temperature accuracy** and control of the PCBA

3 Work Modes **safer and easier** with up to 8 thermocouples

Independent work zones to be turned on/off



PHNE
For PCBs up to 11 x 7 cm / 4 x 3"

Max. Heating area: 108 x 70 mm
4.25 x 2.75 in
Maximum power: 300 W
Thermocouples: x2
Dimensions: 179 x 165 x 41.5 mm
7.04 x 6.5 x 1.63 in
Weight: 1.2 kg
2.6 lb

PHSE
For PCBs up to 13 x 13 cm / 5 x 5"

Max. Heating area: 130 x 135 mm
(Zone A+B) 5.12 x 5.31 in
Maximum power: 800 W
Thermocouples: x4
Dimensions: 195 x 288 x 41.5 mm
7.68 x 11.34 x 1.63 in
Weight: 1.74 kg
3.84 lb

PHBE
For PCBs up to 36 x 28 cm / 14 x 11"

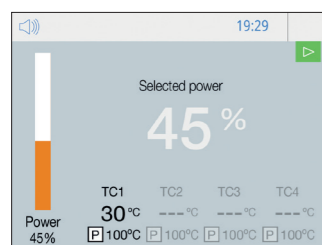
Max. Heating area: 360 x 277 mm
(Zone A+B) 14.2 x 10.9 in
Maximum power: 1400 / 1800 W
Thermocouples: x4
Dimensions: 426 x 444 x 41 mm
16.80 x 17.5 x 1.6 in
Weight: 6.9 kg
15.4 lb

PHXLE
For PCBs up to 51 x 61 cm / 20 x 24"

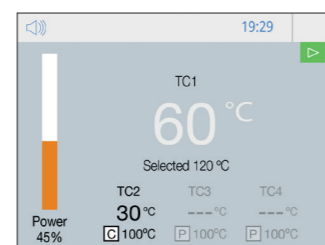
Max. Heating area: 510 x 610 mm
(6 zones) 20 x 24 in
Maximum power: 5400 W
Thermocouples: x8
Dimensions: 790 x 664 x 42 mm
31.1 x 26.1 x 1.65 in
Weight: 18 kg
39.7 lb

Safer and more efficient rework

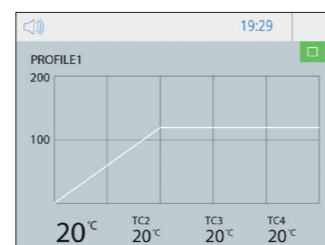
1 Power Mode allows working at a fixed power level with the option of using a protection thermocouple.



2 Temperature Mode keeps the PCBA at a selected temperature, using the regulation or protection TC.



3 Profile Mode allows control of the heating rate of the PCBA by the use of a control and a protection thermocouple.

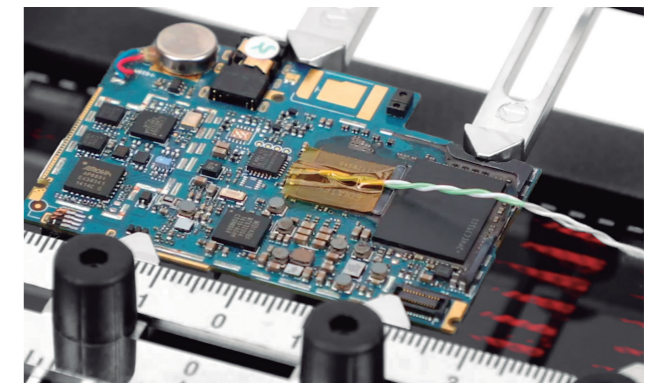


Using Thermocouple Type K

Easy monitoring of the process using the thermocouple (type K).

JBC offers **3 preset temperature profiles** and **22 additional user-defined profiles** to suit all your needs.

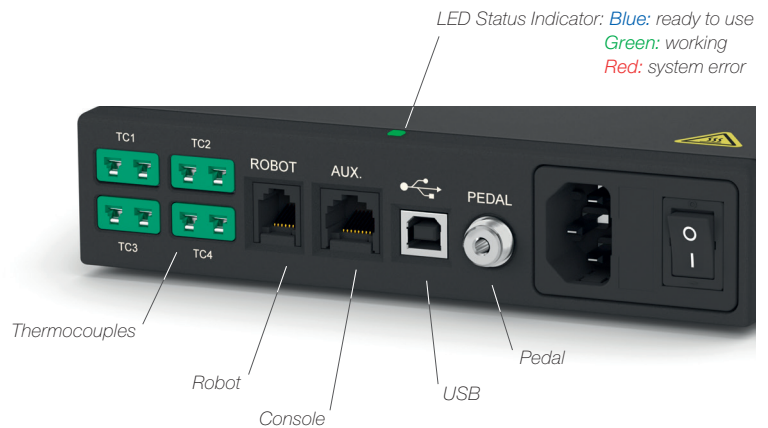
The control thermocouple is used to follow the temperature profile precisely while auxiliary thermocouples can be used to protect the components.



Connections

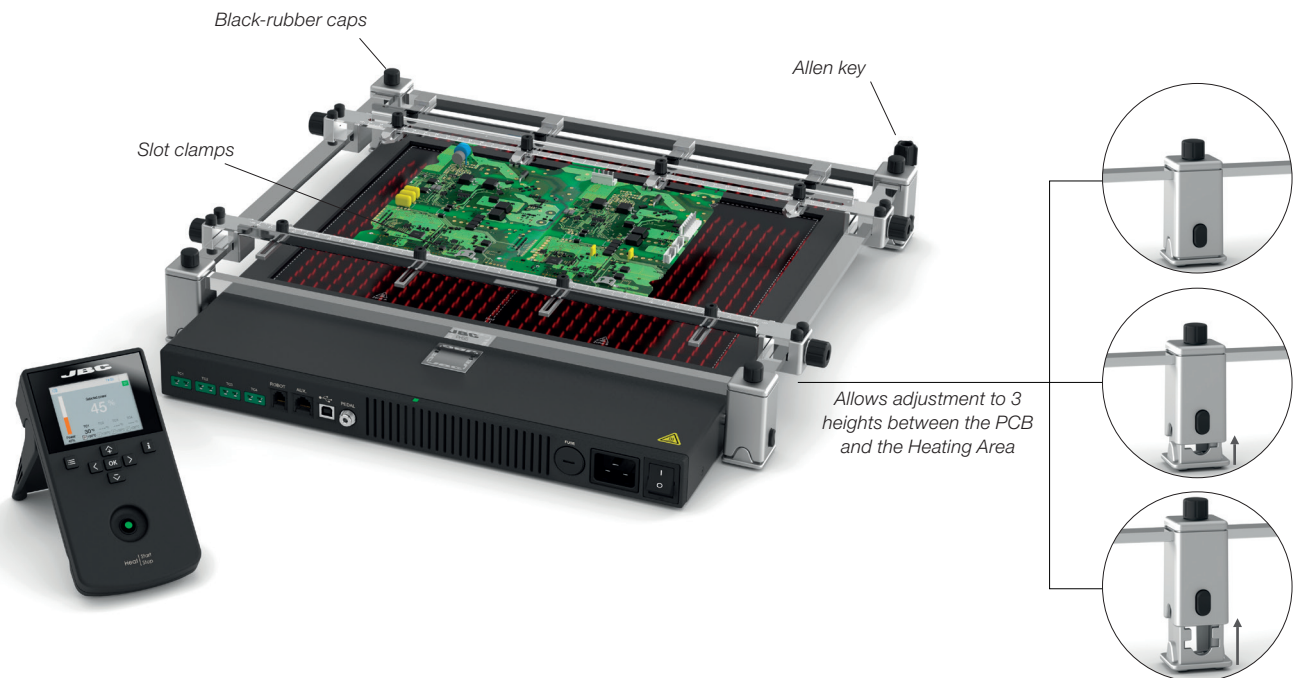
The incorporation of a USB Connector on all stations and control units allows you to **manage your job remotely from a PC**. The most innovative technology to take your work beyond the station.

Connect a pedal to start and stop heating, simulating console button control. Once Work Mode is set, the Heater Unit operates independently with the pedal.



Preheater Set

Complete system for preheating multilayer PCBs, ideal for repetitive soldering jobs. It includes **Preheater, Console, PCB Support, PH218 Thermocouple Type K and PH217 Kapton Tape**.



The support allows you to properly position PCBs of the same batch so as to always heat the same area. It is ideal for repetitive soldering jobs, which means saving time and optimizing workflow.

PCB Support references: **PHNS, PSS, PHSS, PHBS and PHXLS**.

Preheaters Sets references: **PHNEK, PHSMK, PHSEK, PHBEK and PHXLEK**.

I-TRONIK S.R.L. Unipersonale
Viale dell'Artigianato, 20 - 35010 - Peraga di Vigonza (PD)
Tel. +39.049.895.2300 - Fax +39.049.893.4822 - P.IVA 01443020282
commerciale@itronik.it www.itronik.it



0032012/0225