

BONDING



SMD Tape Connectors for 8,12,14,16, 24 mm

Steierform 87-12502 DBGM (Registered Design)

Tape connectors guarantee precise and secure connections of SMD tapes in taping and pick & place machines.

To avoid unnecessary stoppages of pick & place machines these SMD connectors provide precise attachment of top and bottom of the two tape ends. The cover tape is securely joint and can be peeled off continuously across the joint.

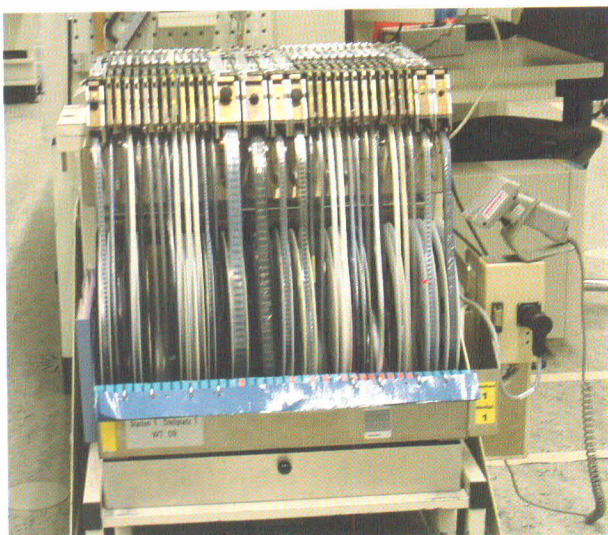
Supplied in rolls of 1,000 pieces. Colour: yellow.

Order No	Format
3.0748.00	for 8 mm Tapes 4,9 x 48 mm, 2 mm Ø dia holes
3.0749.00	for 8 mm Tapes 4,9 x 48 mm, without holes
3.0712.00	for 12 mm Tapes (8 x 48 mm)
3.0714.00	for 14 mm Tapes (10 x 48 mm)
3.0716.00	for 16 mm Tapes (12 x 48 mm)
3.0724.00	for 24 mm Tapes (20 x 48 mm)

Other sizes are available to special order.

This material is also available uncut on rolls. Please see pages 22/23

Clear, instead of the standard yellow, version is available to order.



SMD Tapes Connectors in cut lengths, for 8,12,14,16, 24 mm

Steierform 87-12502 DBGM (Registered Design)

Cut lengths of Tape Connectors can be more convenient and save time. All sizes are available in cartons of 1,000 pieces.

Order No	Format
3.0648.00	for 8 mm Tapes 4,9 x 48 mm 2 mm Ø dia holes
3.0649.00	for 8 mm Tapes 4,9 x 48 mm without holes
3.0612.00	for 12 mm Tapes (8 x 48 mm)
3.0614.00	for 14 mm Tapes (10 x 48 mm)
3.0616.00	for 16 mm Tapes (12 x 48 mm)
3.0624.00	for 24 mm Tapes (20 x 48 mm)

SIPLACE Tape Splicing Tool

NEW!

For the competent joining of Surface Mount Component Tapes of any width or material the SIPLACE Splicing Tool is now available for use with SIPLACE Joining Stripes and our SMD Tape Connectors. Siemens AG developed these products.

Order no
3.0001.00



SIPLACE Brass Joining Stripes

NEW!

Order no
3.0002.00
Packed in boxes of 4,000 pieces



BONDING

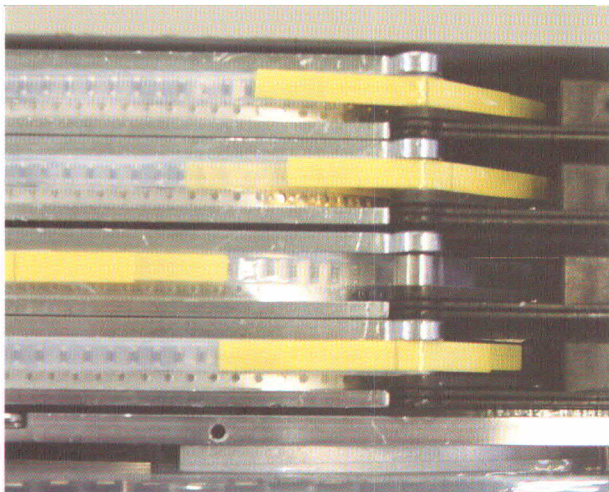
SMD Cover Tape Extenders

Steierform 87-12503, Patent applied for

When starting a component reel without a leader tape on an automatic pick and place machine, the peeling away of the cover tape to make it available to the take up device will cause some components to be lost. By using these Steierform SMD Cover Tape Extenders such component losses can be avoided. After attaching a Cover Tape Extender to the cover tape the non-adhesive 'tail' is used to feed the component tape through the machine without component loss. The type of adhesive used is unlikely to fail, even during prolonged tension applied in the machine.

The three standard sizes are packed in 500s or 250s in special cartons for secure transport and use. Other widths are available to order. Clear, instead of the standard yellow, version is available to order.

Order no	Format imm
3.2505.00	5 x 396
3.2509.00	9 x 396
3.2518.00	18 x 396



Reel Sealers

Steierform 87-10104

Reel Sealers secure and mark the ends of tapes on reels, prevent unravelling and make it easy to find and remove them again. This is helped by their bright orange colour and adhesion free portion.

Supplied in rolls of 2.500 pieces.

Order No	Format mm
3.5007.00	50 x 7
3.5011.00	50 x 11

SMD-Trial Placement

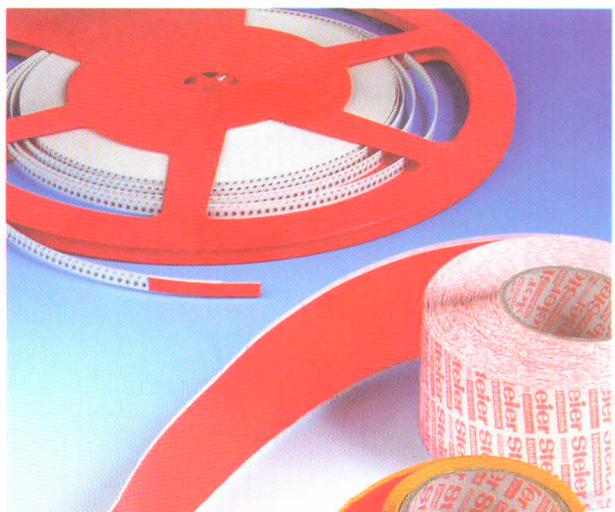
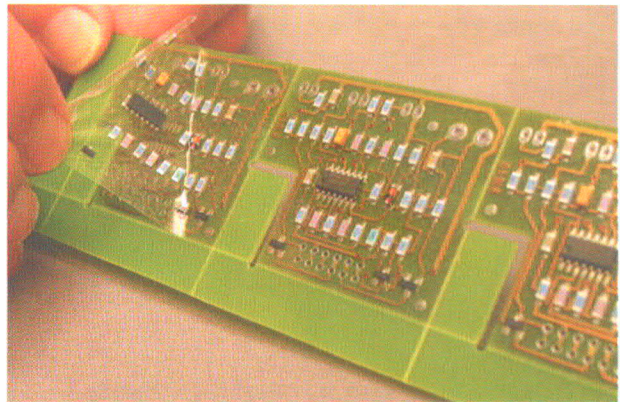
Steierform 87-92403



When setting up automatic pick and place machines for new PCBs it is often desirable to have dummy runs by placing components onto a thin clear double-sided adhesive foil. The highly transparent material allows easy checking of the component positioning and their removal from the board without residue. Standard size: DIN A4 sheets, 25 sheets per pack.

This material is also available on rolls of various widths.

Order no	Format Dia mm
3.2497.00	210 x 297





SMD Double Splice Tape for 8 mm Component Tapes

Steierform 87-12502

No down times because of accurate joining. Tape Connectors guarantee perfect and reliable joints in 8 mm SMD tapes.

Joining

- without any tools or fixtures
- with precise pitch spacing
- with convenient pre-cut length

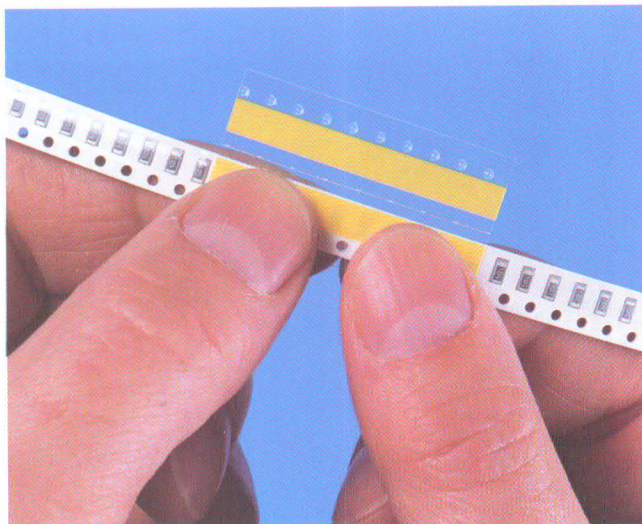
Siemens AG developed and patented the SMD Double Splice Tape. It is supplied in short lengths, ready for use. After peeling off the upper tape the raised dots of the clear plastic carrier engage with the sprocket holes and align the SMD tape ends perfectly with each other and the joining tape. The first adhesive tape then joins up the SMD cover tape ends. The perforated centre line of the carrier, later to be discarded, helps in folding the connector around the component tape, providing further alignment and joining from the other side.

Order No	Format mm
----------	-----------

3.0740.00	22 x 40
-----------	---------

Supplied in cartons of 500 pieces.

SMD Double Splice Tape can also be supplied in continuous lengths for individual cutting on site and also in transparent version to order.



Connector for Radial Component Tapes, made of self-adhesive foil material

Steierform 87-10122

These connectors ensure secure joints of component tapes, while used in taping and insertion machines. Quick and accurate application is aided by the arrangement on the roll and the punched holes. Supplied in rolls of 1,000 pieces. Colour: transparent or brown.

Order No	Format mm
3.2263.90 (transparent)	16 x 63 mm with 5 x 5 mm dia holes
3.2263.60 (brown)	16 x 63 mm with 5 x 5 mm dia holes

Connector for Radial Component Tapes, made of Crêpe Paper Material

Steierform 87-30104

Product description as above, but material used forms more easily around component leads. Supplied in rolls of 1,000 pieces. Colour: brown.

Order No	Format mm
3.1863.60	16 x 63 mm with 5 x 5 mm dia holes

