

Specification

Item		
Board size	standard specification	50×50 ~ 1,200×360mm
	Longer sized PWB ※1	50×50 ~ 1,500×360mm
Component height		6mm/12mm
Component size	Laser recognition	0603(0201) ~ □33.5mm
Placement speed	Optimum	23,300CPH
	IPC9850	18,300CPH
Placement accuracy		±0.05mm(Cpk≥1)
Feeder inputs		Max.40 in case of 8mm tape
Power supply		200 to 415 VAC, 3-phase
Apparent power		3.0kVA
Oparating air pressure		0.5±0.05Mpa
Air consumption		345L/min(Opt.:Vacuum Pump 50L/min)
Machine dimensions(W×D×H) ※2		1,920×1,393×1,440mm
Mass(approximately)		1,420kg

※1 Long board support is optional.  
※2 When equipped with the long board option, the machine width is 2,520mm.

Options

Recognition system	HMS(Height Measurement System) / Bad mark reader
Operation system	Touch panel / HOD / Feeder position indicator
Conveyor	Applicability to long PWB(1,500mm)※1/ IN・OUT buffer / Support table※1 Automatic board width adjustment
Electrical protection	Ground-fault interrupter / UPS
Others	FCS calibration jig / Super foot / Caster / Vacuum Pump Solder lighting / Component quantity control
Software	EPU
Component handling and feeders	Tape feeder(8 ~ 72mm) / Bulk feeder / Stick feeder Matrix Tray Server TR5※2/ TR5S attachment kit※2/ Tray station※3 Trash box / Splicing jig / Tape reel mounting base / Feeder stocker Feeder Calibration Jig with Monitor

※1 Check with factory for details.  
※2 TR5S installation kit is required to use the TR5S matrix tray server.  
※3 Tray station is required to use the tray holder on rear side.

※Please refer to the product specification for details.



3E EVOLUTION

LED Mounter

JX-300LED



JUKI CORPORATION  
Electronic Assembly Systems Business Unit

2-11-1, Tsurumaki, Tama-shi, Tokyo 206-8551, JAPAN  
TEL.81-42-357-2293 FAX.81-42-357-2285

<http://www.juki.co.jp>



JUKI CORPORATION HEAD OFFICE  
The activities of research, development, design, sales, distribution, and maintenance services of industrial sewing machines, household sewing machines and industrial robots, etc., including sales and maintenance services of data entry systems.



I-TRONIK S.R.L. - Macchine e prodotti per l'industria elettronica  
Via dell'Artigianato, 20 - 35010 - Peraga di Vigonza (PD)  
Tel. +39.049.895.2300 - Fax +39.049.893.4822 - P.IVA 01443020282  
[commerciale@itronik.it](mailto:commerciale@itronik.it) - [www.itronik.it](http://www.itronik.it)

■JUKI Specifications and appearance may be changed without notice.

Jan-2013/Rev.00

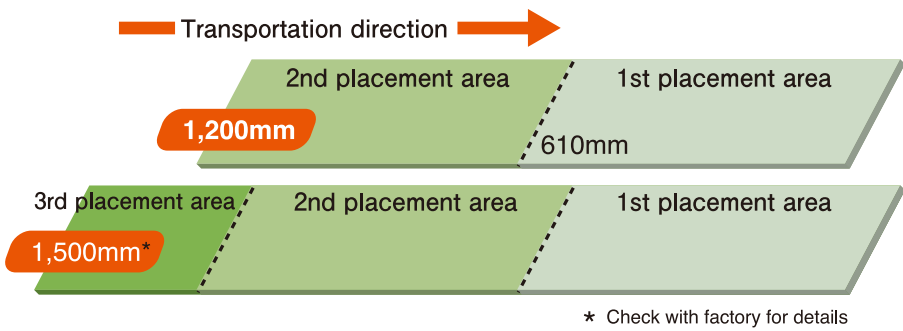
For ligthing application,  
LCD backlight and large LED board



# A flexible placement system, specially designed for LED lighting products and mid- to large LCD display backlights.

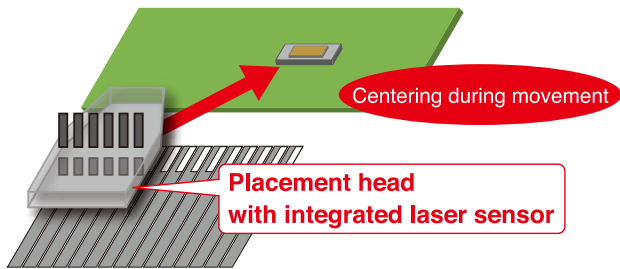
## Supports ultra-long boards up to 1,500mm

Productivity is improved by optimizing placement distribution over placement areas and shortening the clamping time. A new high-speed clamping system reduces the transport time for long and super-long boards.



## JUKI laser centering for high speed, high accuracy placement

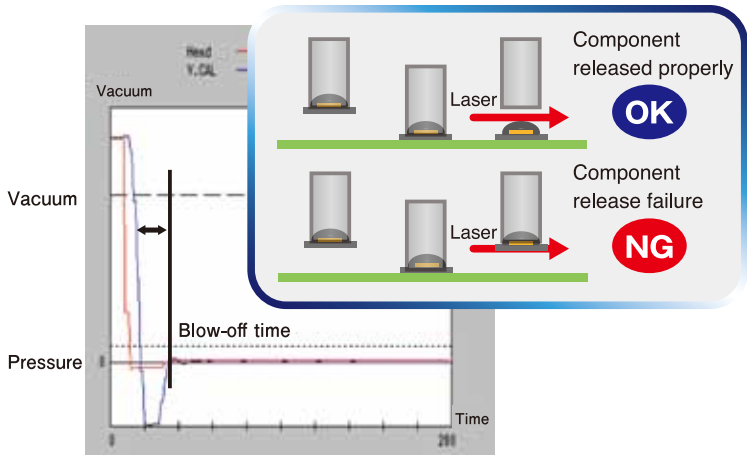
The integrated laser centering allows the head to move directly from the pick position to the placement position.



Component centering is done on-the-fly between the pick position and placement location by the integrated laser sensor.

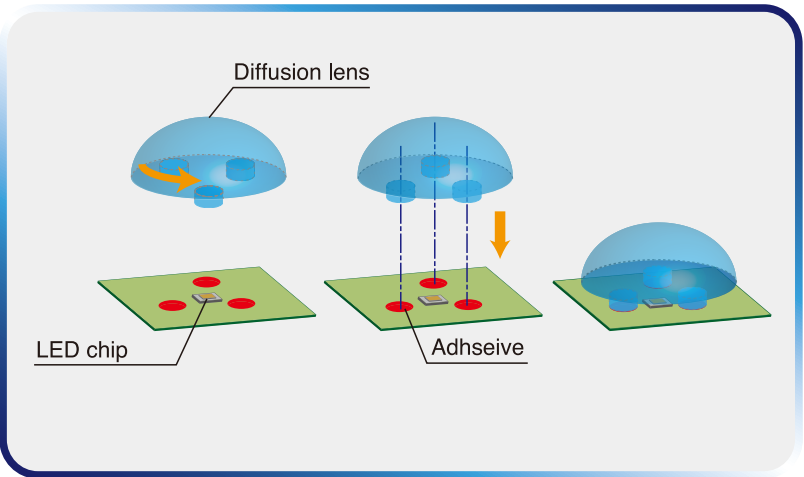
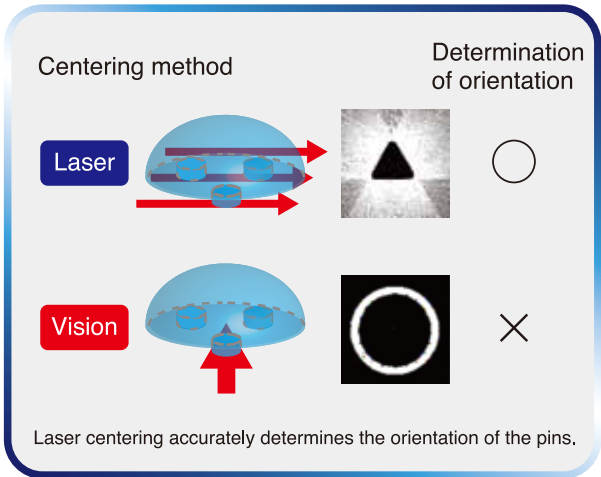
### Improved placement quality

Component release is monitored by the laser sensor to ensure components are not picked up after placement. Blow-off can be set for components with sticky top surfaces.



### High-precision placement of diffusion lenses

JUKI laser centering can use pins on diffusion lenses for more accurate placement.



## Wide variety of special nozzles for LEDs

JUKI has tremendous experience in LED placement and designs nozzles specifically for LEDs. Contact us for more information.



## Unique features for flexibility

### Accurate placement even without fiducial marks

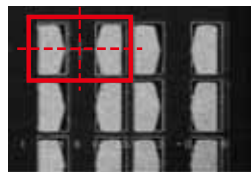
Using JUKI lighting and fiducial recognition technology, the JX-300LED can use solder pads as fiducials.

### Remaining part quantity management

To prevent variations of LED brightness due to lot differences, the number of parts remaining in the feeders is checked prior to starting production. If there are not enough parts to complete the board using the loaded feeders, an alarm is displayed.



Standard fiducial recognition  
Fiducial recognition



Long board  
Solder pad recognition

## Tray component support

A tray holder or TR5S matrix tray server is supported (option).



LED Mounter

## JX-300LED

- ◎ 23,300CPH chip (Laser centering/Optimum)
- ◎ 18,300CPH chip (Laser centering/ IPC9850)
- ◎ One multi-nozzle laser head (6 nozzles)
- ◎ From 0603(0201) to 33.5mm square components

